

Map & Site Photographs to accompany
Comparison of Alternatives **TABLE A-8**
(Section 3 Uxbridge (Oak Street/State Park/Tow Path from Hartford Avenue West to
Mendon Street)

Maps:

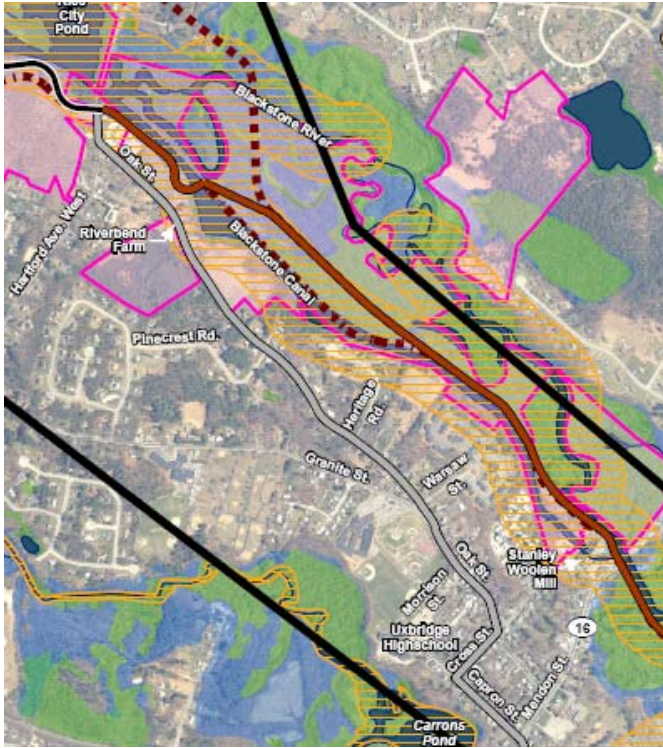


Photo 1: Looking south on Capron Street near Mendon Street.
Photo date: March 31, 2006.



Photo 2: Looking north along the canal tow-path within BR&CH State Park.
Photo date: February 19, 2008



Photo 3: Looking southeast from the existing tow path at a seasonally flooded field that the 'Walking Path' alignment would pass through.
Photo date: February 19, 2008



Photo 4: Looking north at the wooded portion of the existing walking path.
Photo date: May 6, 2008